



Self-Propelled Articulating Booms

Z™ -60/37FE

Specifications

Model	Z-60/37FE	
Measurements	Metric	US
Working height maximum*	20.16 m	65 ft 7 in
Platform height maximum	18.16 m	59 ft 7 in
Horizontal reach maximum	11.15 m	36 ft 7 in
Up and over clearance maximum	7.39 m	24 ft 3 in
▲ Platform length	0.91 m	3 ft
▲ Platform width	2.44 m	8 ft
▲ Height - stowed	2.54 m	8 ft 4 in
Height - transport (jib tucked under)	2.62 m	8 ft 7 in
▲ Length - stowed	8.15 m	26 ft 9 in
Length - transport (jib tucked under)	6.30 m	20 ft 8 in
▲ Width	2.49 m	8 ft 2 in
▲ Wheelbase	2.49 m	8 ft 2 in
▲ Ground clearance - center	0.33 m	1 ft 1 in

Productivity

Lift capacity	227 kg	500 lbs
Platform rotation	160°	160°
Vertical jib rotation	135°	135°
Turntable rotation	355° non-continuous	
Turntable tailswing - riser up	0.58 m	1 ft 11 in
Turntable tailswing - riser down	0.81 m	2 ft 8 in
Drive speed - stowed	6.4 km/h	4.0 mph
Drive speed - raised**	1.0 km/h	0.7 mph
Gradeability - stowed***	45%	45%
Turning radius - inside	2.51 m	8 ft 3 in
Turning radius - outside	5.69 m	18 ft 8 in
Controls	24V DC proportional	
Tyres	355/55D 625	

Power

Drive system	34 V 3-Phase AC	
Power source	48 V DC (eight 6 V batteries) 390 Ah capacity 24.8 hp (18.5 kW) Kubota D1105 T4f driven AC generator	
Auxiliary power unit	12 V DC	12 V DC
Hydraulic tank capacity	68.4 L	18 gal
Fuel tank capacity	64.4 L	17 gal

Sound & Vibration Levels

Sound pressure level (ground workstation)	77 dBA
Sound pressure level (platform workstation)	72 dBA
Vibration	0.55 m/s ² (1.81 ft/s ²)

Weight****

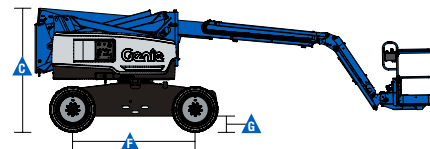
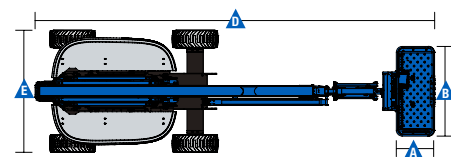
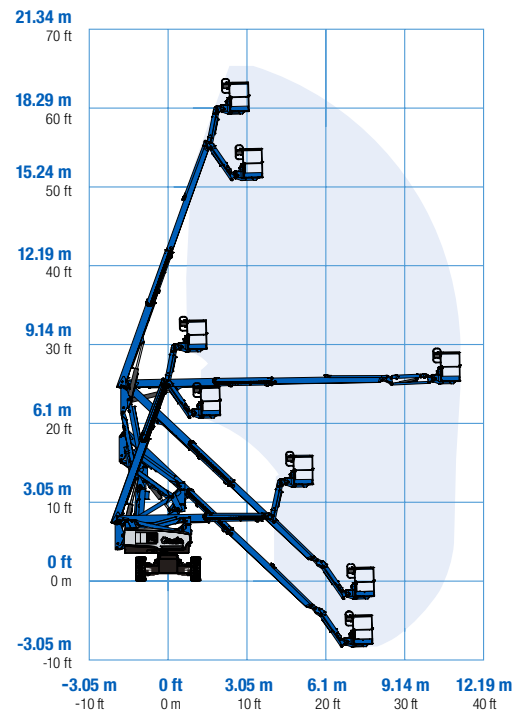
Z-60/37FE	7,686 kg	16,944 lbs
-----------	----------	------------

Standards Compliance

AS 1418.10

* The metric equivalent of working height adds 2 m to platform height. U.S. adds 6 ft to platform height.
 ** In lift mode (platform raised), the machine is designed to operate on firm, level surfaces only.
 *** Gradeability applies to driving on slopes. See operators manual for details regarding slope ratings.
 **** Weight will vary depending on options and/or country standards.

Range Of Motion Z-60/37FE





Self-Propelled Articulating Booms

Z™ -60/37FE

Features

Standard Features

Measurements

- 20.16 m (65 ft 7 in) working height
- 11.15 m (36 ft 7 in) horizontal reach
- 7.39 m (24 ft 3 in) up and over clearance
- Up to 227 kg (500 lbs) lift capacity

Productivity

- 1.52 m (5 ft) jib boom with 135° working range
- Digital hour meter with battery charge indicator and diagnostic readout
- 4 Wheel AC electric drive system
- Variable speed high efficiency hydraulic power unit
- Self-levelling platform
- Hydraulic platform rotation
- Proportional joystick controls
- Telematics Ready Connector
- Thumb rocker steering
- Drive enable
- AC power cord to platform
- Horn
- Hour meter
- Tilt alarm
- Descent & travel alarms
- Flashing beacon
- Tilt cut-out
- 355° non-continuous turntable rotation
- Locking turntable covers
- Positive traction drive
- Certified load sensor
- Lockable platform control box cover

Power

- 48 V DC battery pack (390 Ah)
- 12 V DC auxiliary power
- 25 A temperature compensated smart charge system
- Battery charge indicator
- Low battery voltage interrupt

Platform

- Steel 2.44 m (8 ft) tri entry with side swing gate

Engine

- 18.5 kW (24.8 hp) Kubota T4 diesel

Drive

- 4WD Electric AC

Axle

- Active oscillation

Tyres

- Rough terrain non-marking foam filled

Options & Accessories

Productivity Options

- Half mesh platform inserts
- Air line to platform
- 240 V power to platform
- Work lights package
- Biodegradable hydraulic oil
- Operator Protective Structure
- Operator Protective Alarm



Genie – Toll free number 1800 788 633

Brisbane
HEAD OFFICE

33 Kimberley Street
Darra QLD 4076

Sydney

74 Glendenning Road
Glendenning NSW 2761

Melbourne

374 Hammond Road
Dandenong VIC 3175

Adelaide

16-18 Nixon Road
Wingfield SA 5013

Perth

126 Sheffield Road
Welshpool WA 6106

Darwin

33 McCourt Road
Yarrowonga NT 0830

Genie USA

18340 NE 76th Street
P.O. Box 97030
Redmond, Washington
98073-9730

Distributed By:

Effective Date: July, 2015. Product specifications and prices are subject to change without notice or obligation. The photographs and/or drawings in this document are for illustrative purposes only. Refer to the appropriate Operator's Manual for instructions on the proper use of this equipment. Failure to follow the appropriate Operator's Manual when using our equipment or to otherwise act irresponsibly may result in serious injury or death. The only warranty applicable to our equipment is the standard written warranty applicable to the particular product and sale and we make no other warranty, express or implied. Products and services listed may be trademarks, service marks or trade names of Terex Corporation and/or their subsidiaries in the USA and many other countries. Genie is a registered trademark of Terex South Dakota, Inc. © 2015 Terex Corporation.

Z-60/37FE 170223

www.genielift.com.au