



PANORAMIC P50.18 PLUS



PERFORMANCE AND FEATURES

P50.18 PLUS

PERFORMANCE

Total unladen weight (kg)	13300
Maximum capacity (kg)	5000
Lifting height (m)	17,5
Maximum reach (m)	13,5
Maximum operating height (m)	9,2
Maximum operating reach (m)	3,7
Capacity at maximum height (kg)	2500
Capacity at maximum reach (kg)	750
Lateral boom movement (mm)	± 445
Tilting correction (%)	± 8
Boom sections	4

POWERTRAIN

Turbo motor	DeutzTCD3.6
Displacement/cylinders	3600/4
Engine Power (kW/HP)	75/102
Anti-pollution technology	STAGE IV, SCR+DOC
Reversible fan	-
Maximum speed (km/h)	40
Fuel tank (l)	140
AdBlue tank (l)	18
Hydrostatic transmission	● - 2V
EPD	●
Axles	Drop portal
Reduction hub	RR700
Machine brakes	Dry discs
Automatic parking brake	●

HYDRAULIC

Hydraulic pump	LS
Flow rate/pressure (l/min – bar)	104 - 250
Hydraulic tank	110
Hydraulic outlet at the top of the boom	●
Rear hydraulic outlets	○

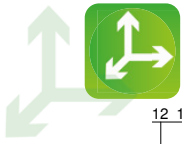
CAB

Cab configuration	ECO
MCDC	Complet
FOPS LIV II cab	●
ROPS cab	●
Cab commands	Electronic joystick control
Tilting Cab	-
Reverse shuttle	Dual reverse

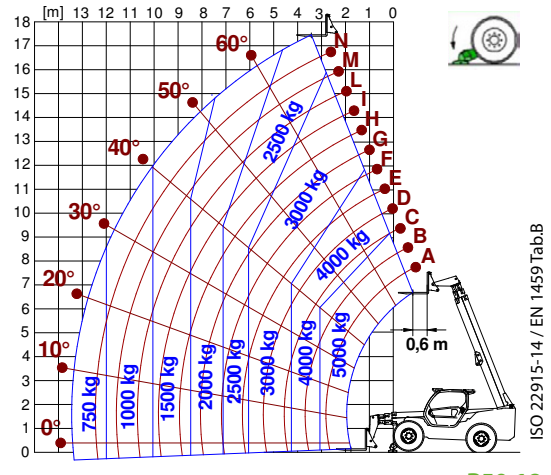
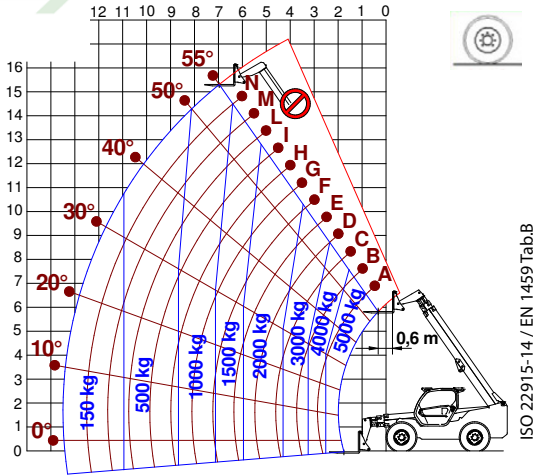
CONFIGURATION

Cab suspension	-
Boom suspension	○
Suspension on axles	-
Work headlights on cab	○
Sun blind	○
Tac-lock	●
Provision for a platform	○
Two floating forks	●
Inching-Control	●
Four-wheel drive	●
Four-wheel steering	●
Three steering modes	●
Standard tyres	400/80-24
Optional tyres	440/80-24, 445/65-22,5"
Stabilisers	Narrow
Turret rotation	-
Type approval as an agricultural tractor	-
Approval with PNEUMATIC braking	-
Approval with HYDRAULIC braking	-
PTO	-
3-point linkage	-

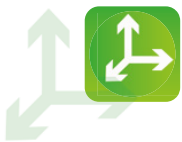
- Not Available. ● standard. ○ optional.



LOAD CHARTS

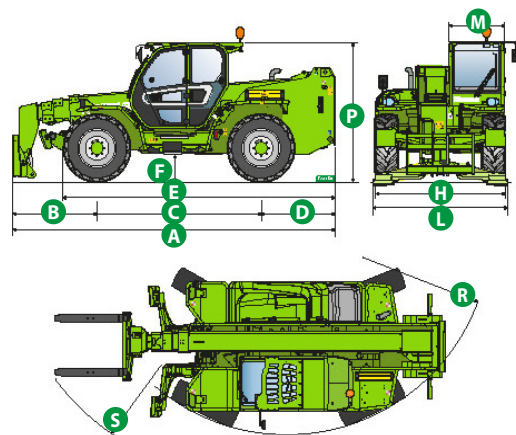


P50.18



DIMENSIONS

	P50.18 PLUS		
A (mm)	6190		
B (mm)	1745		
C (mm)	3060		
D (mm)	1385		
E (mm)	5067		
F (mm)	485		
H (mm)	2480		
L (mm)	2550		
M (mm)	1010		
P (mm)	2535		
R (mm)	4265		
S (mm)	5611		





A large grid area for handwritten notes or calculations, consisting of approximately 20 columns and 45 rows of small squares.



MERLO S.P.A.

Via Nazionale, 9
12010 S. Defendente di Cervasca
(Cuneo) Italia
Tel. +39 0171 614111
Fax +39 0171 684101

info@merlo.com
www.merlo.com

Your Merlo dealer

A rectangular box intended for the name of the Merlo dealer, currently empty.

DS_P5018_0320_ENG