

## 1500AJP

ULTRA SERIES BOOM LIFT



### Performance

Platform Height	45.72 m
Horizontal Outreach	22.86 m
Up and Over Height	18.29 m
Swing	360° Continuous
Platform Capacity-Restricted	450 kg
Platform Capacity-Unrestricted	270 kg
Platform Rotator	180° Hydraulic
Jib Length	2.4 m
Jib Range of Articulation	130° (+75, -55)
Jib Horizontal Rotation	125° (55 right, 70 left)
Weight <sup>1</sup>	26,039 kg
Drive Speed	4.5 km/h
Gradeability	40%
Turning Radius (Inside)	
Axles Retracted	7.12 m
Axles Extended	2.3 m
Turning Radius (Outside)	
Axles Retracted	9.52 m
Axles Extended	6.6 m
Tailswing	
Tower up	0
Tower down	2.49 m

### Standard Specifications

#### Power Source

Diesel Engine	
Deutz TCD 3.6L Tier 4i	74.4 kW
Fuel Tank Capacity	170 L

#### Hydraulic System

• Hydraulic Tank Capacity	352 L
---------------------------	-------

#### Tyres

• Standard	445/50D710 24 ply Foam-Filled
------------	-------------------------------

### Standard Features

- Articulating Jib
- Dual Rated Capacities (270/450 kg)
- Drive-Out Extendable Axles
- 180° Hydraulic Platform Rotator
- 5.5 kVA Generator including QAC outlets in Platform and ELCB
- Tilt Light and Alarm
- Swing-Out Engine Tray
- 12V-DC Auxiliary Power
- Hourmeter
- Control ADE® System
- Hydrostatic Drive
- Proportional Controls
- SkyGuard®
- Dual USB Power Outlet
- Gull-Wing Steel Hoods
- 445/50D710 Foam-Filled Rim Protector Lug Tread Tyres
- Platform Console Machine Status Light Panel<sup>2</sup>
- Lifting/Tie Down Lugs
- Engine Distress Warning/Shutdown—Selectable via JLG Analyzer
- All Motion Alarm
- LCD Panel at Operator's Platform Control Console
- Quick Stik®
- Load Sensing System (LSS)
- Inward Self-closing, Self-latching Swing Gate
- Tool Tray
- Cylinder Bellows
- 1/2" Airline



### Accessories & Options

- Light Package<sup>3</sup>
- Soft Touch System
- Cold Weather Start Kit<sup>4</sup>
- Hostile Environment Kit<sup>5</sup>
- Cold Package Plus<sup>6</sup>
- Fall Arrest Platform
- Mesh to Mid Rail
- Console Cover
- ClearSky
- Fire Extinguisher
- Tool Tray
- Special Hydraulic Oils
- Accessory Packages:
  - SkyGlazier®
  - Pipe Rack

1. Certain options or country standards increase weight.

2. Provides indicator lights at platform control console for system distress, fuel level, low fuel, 5 degree tilt light and foot switch status.

3. Includes platform mounted worklights and drive/backup lights.

4. Includes engine block heater, battery heater and oil tank heater.

5. Includes console cover, boom wipers and cylinder bellows.

6. Includes extreme cold engine oil, fuel conditioner, engine block heater, battery blanket, glow plugs, hydraulic tank heater, oversized footswitch and arctic hydraulic oil priced separately.

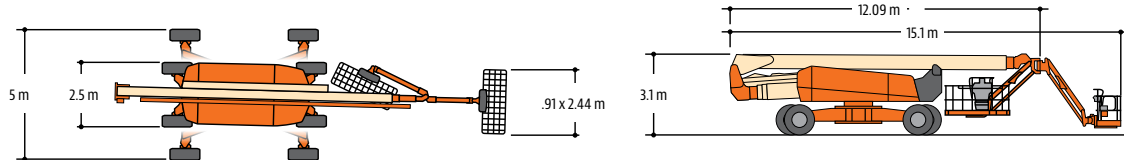
## 1500AJP

ULTRA SERIES BOOM LIFT



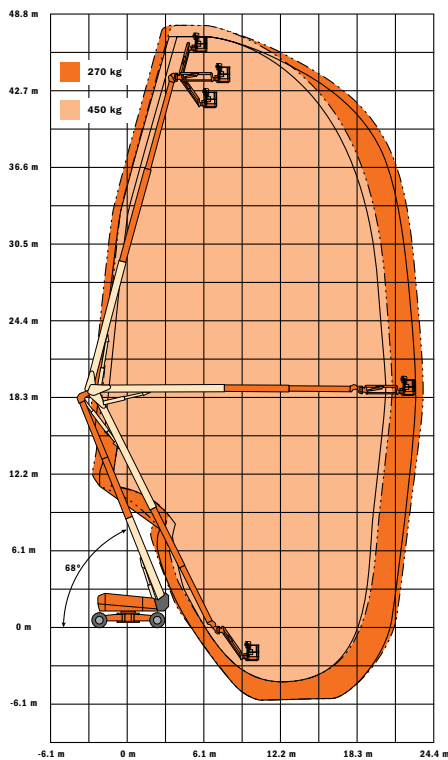
### Dimensions

All dimensions are approximate.



### Reach Diagram

#### 1500AJP



### The JLG "1 & 5" Warranty

JLG Industries, Inc. backs its products with its exclusive "1 & 5" Warranty. We provide coverage on all products for one (1) full year and cover all specified major structural components for five (5) years. Due to continuous product improvements, we reserve the right to make specification and/or equipment changes without prior notification. This machine meets or exceeds AS/NZS 1418.10 2011 as originally manufactured for intended applications.

#### JLG Industries (Australia)

358 Park Road  
Regents Park, NSW 2143  
Telephone 02 8718 6300  
Fax 02 8718 6377  
[www.jlg.com.au](http://www.jlg.com.au)

An Oshkosh Corporation Company